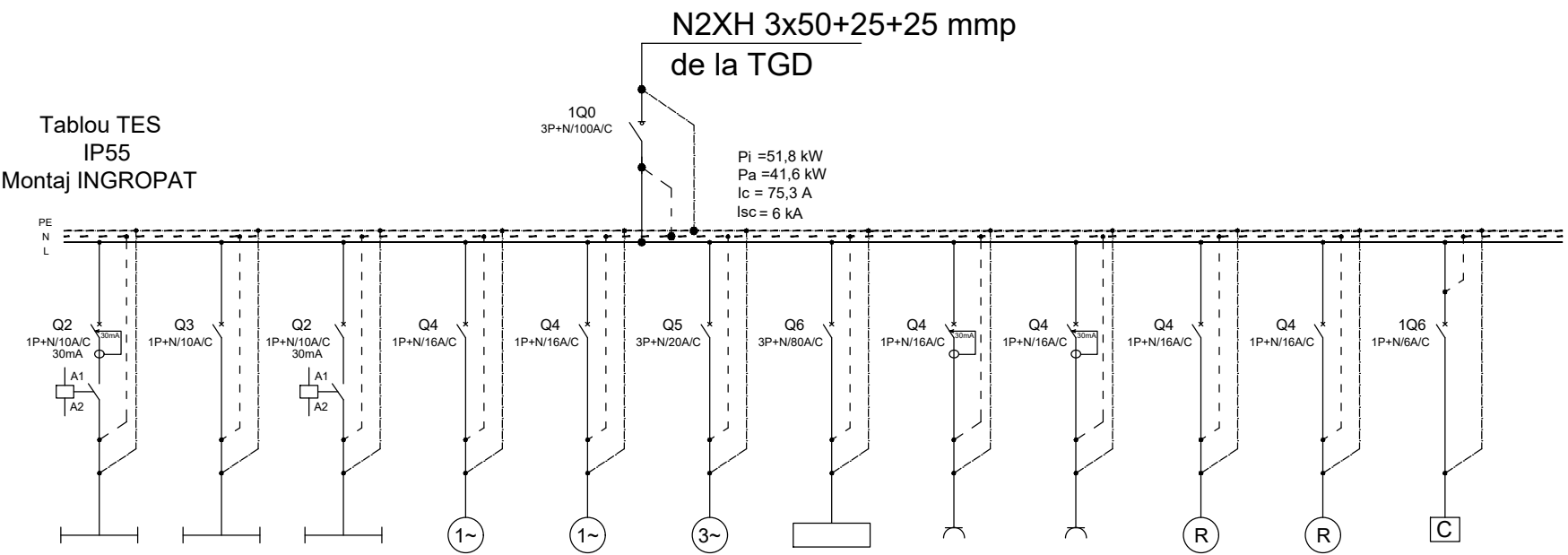


Tablou TE-PCT- TABLOU ELECTRIC PUNCT TERMIC

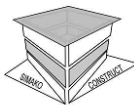

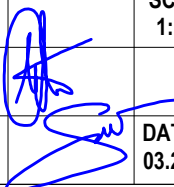


Denumire Circuit	CL1	C1	C2	CF1	CF2	CF3	CF4	CP1	CP2	R1	R2	CC
Pi [ kW ]	0,4	0,03	0,05	0,37	1,0	9,0	37,0	2,0	2,0			0,25
Ic [ A ]	2,2	0,2	0,3	1,9	5,1	16,4	54,0	10,8	10,8			1,0
Conductor [ mmp ]	N2XH3x1,5	N2XH3x1,5	N2XH3x1,5	N2XH3x2,5	N2XH3x2,5	N2XH5x4	N2XH4x25+16	N2XH3x2,5	N2XH3x2,5			N2XH3x2,5
Protectie	1P+N/10A/C/30mA	1P+N/10A/C/30mA	1P+N/10A/C/30mA	1P+N/10A/C	1P+N/10A/C	3P+N/20A/C	3P+N/80A/C	1P+N/16A/C/30mA	1P+N/16A/C/30mA	1P+N/16A/C	1P+N/16A/C	1P+N/6A/C
Repartie Faza	L1	L2	L3	L1	L2	L1,L2,L3	L1,L2,L3	L3	L1	L2	L3	L1
Destinatie	CIRCUIT ILUMINAT BLL	CIRCUIT ILUMINAT EXT+H	CIRCUIT ILUMINAT VEGHE	BASA	GRUP POMPARE PANOURI SOLARE	BOILER ELECTRIC	TE MODUL TERMIC	CIRCUIT PRIZE	CIRCUIT PRIZE	REZERVA 1	REZERVA 2	CIRCUIT COMANDA

numar disjunctoare tip  
1Q4 — nume disjunctur  
3P/6A/C — tip curba disjunctur  
calibru disjunctur  
numar poli

Denumire tablouri  
TEE1  
Etaj 1  
Tablou electric

Tablou TE-PCT

VERIFICATOR/EXPERT PROIECTANT GENERAL S.C. SIMAKO CONSTRUCT S.R.L.  RO 23227461 J29/324/08.02.2008 Tel: 0729/451943, 0724/762806				<b>MODERNIZARE - REPARAȚII INTERIOARE</b> <b>LICEUL TEHNOLOGIC PETRU PONI</b> <b>CORP C10 - CANTINA</b>  Amplasament: Strada Preciziei, nr. 18, Sector 6, BUCUREȘTI		PR.NR. SMK32/2022  FAZA  P.T.+D.E.		
PROIECTANT DE SPECIALITATE S.C. TOTAL PROIECT CONSTRUCTII S.R.L. RO 16630410,J40/2004,Tel:0742588901, 0744495942, STRADA BALCESTI, NR.8, SECTOR 3, BUCUREȘTI						BENEFICIAR:  SECTORUL 6 AL MUNICIPIULUI BUCUREȘTI  Adresa beneficiar: Calea Plevnei, nr. 147-149, Sector 6, BUCUREȘTI		
SEF PROIECT  Arh. D. JUNEAE				SCARA 1:100		SPECIALITATEA:INSTALATII ELECTRICE - TABLOURI		
PROIECTAT  Ing. Iulian Cristea				SCHEMA TABLOU ELECTRIC TE-PCT				
DESENAT  Ing. Sorina Cristea		DATA 03.2026		PLAN NR: CORP C10		IE TB 01		REVIZIA NR.:
Acest desen si informatiile cuprinse in el nu pot fi copiate, reproduse sau utilizate, partial sau in intregime decat cu acordul scris al S.C.SIMAKO CONSTRUCT S.R.L si nu vor fi folosite in alt scop decat cel pentru care au fost elaborate								